

# Arizona Game and Fish Department Native Trout Program

Mike Anderson

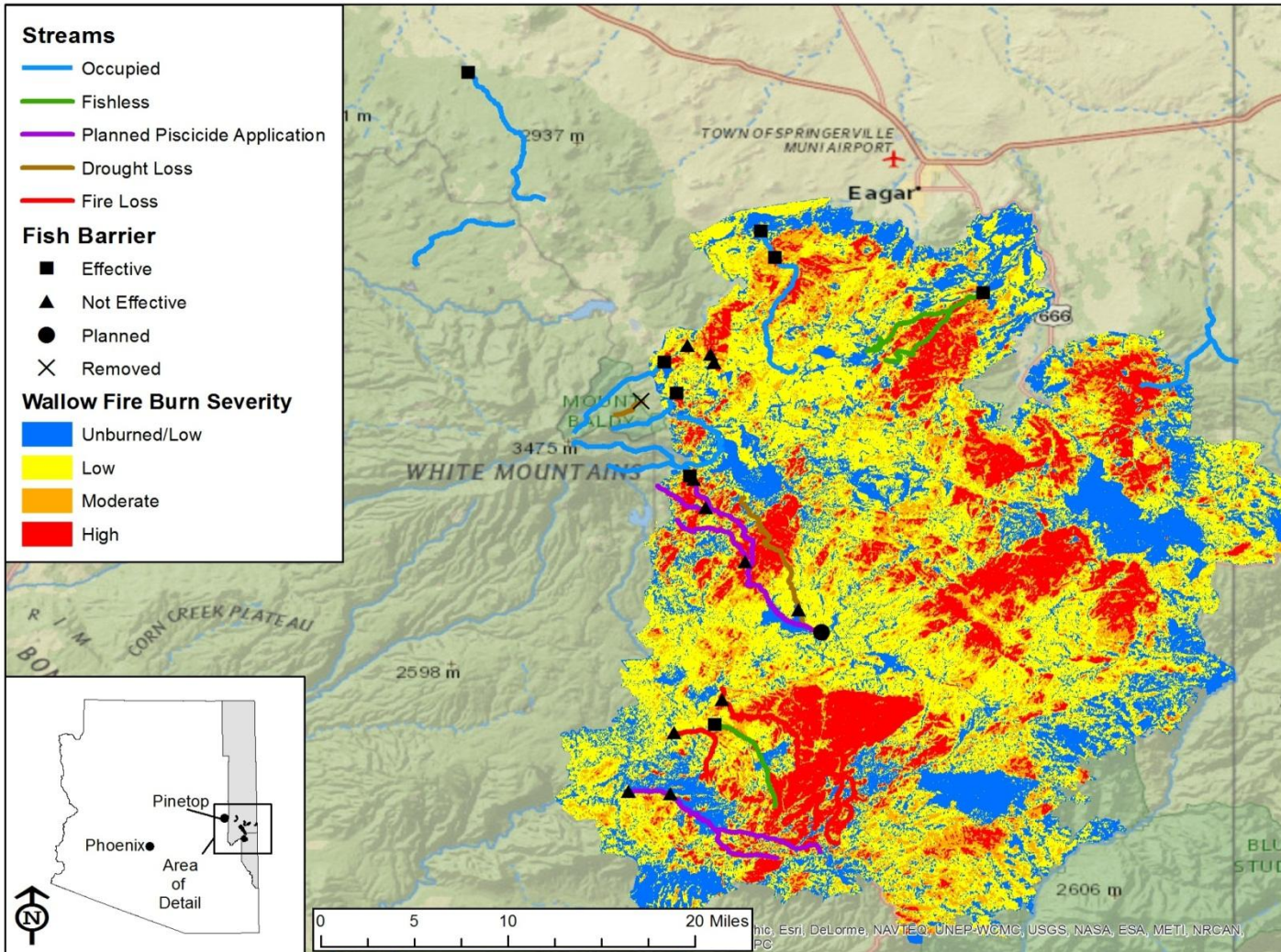


# Overview

---

- ◉ Status of Apache Trout in AZ
- ◉ Status of Gila Trout in AZ
- ◉ Partnership Waters Program
- ◉ Arizona Trout Challenge

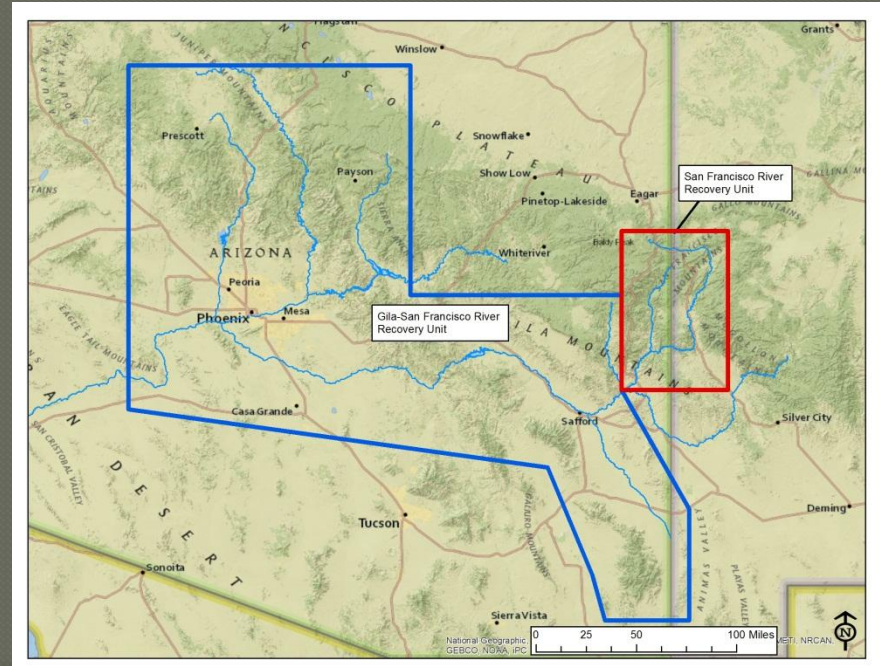
# Apache Trout Status



# Gila Trout Status

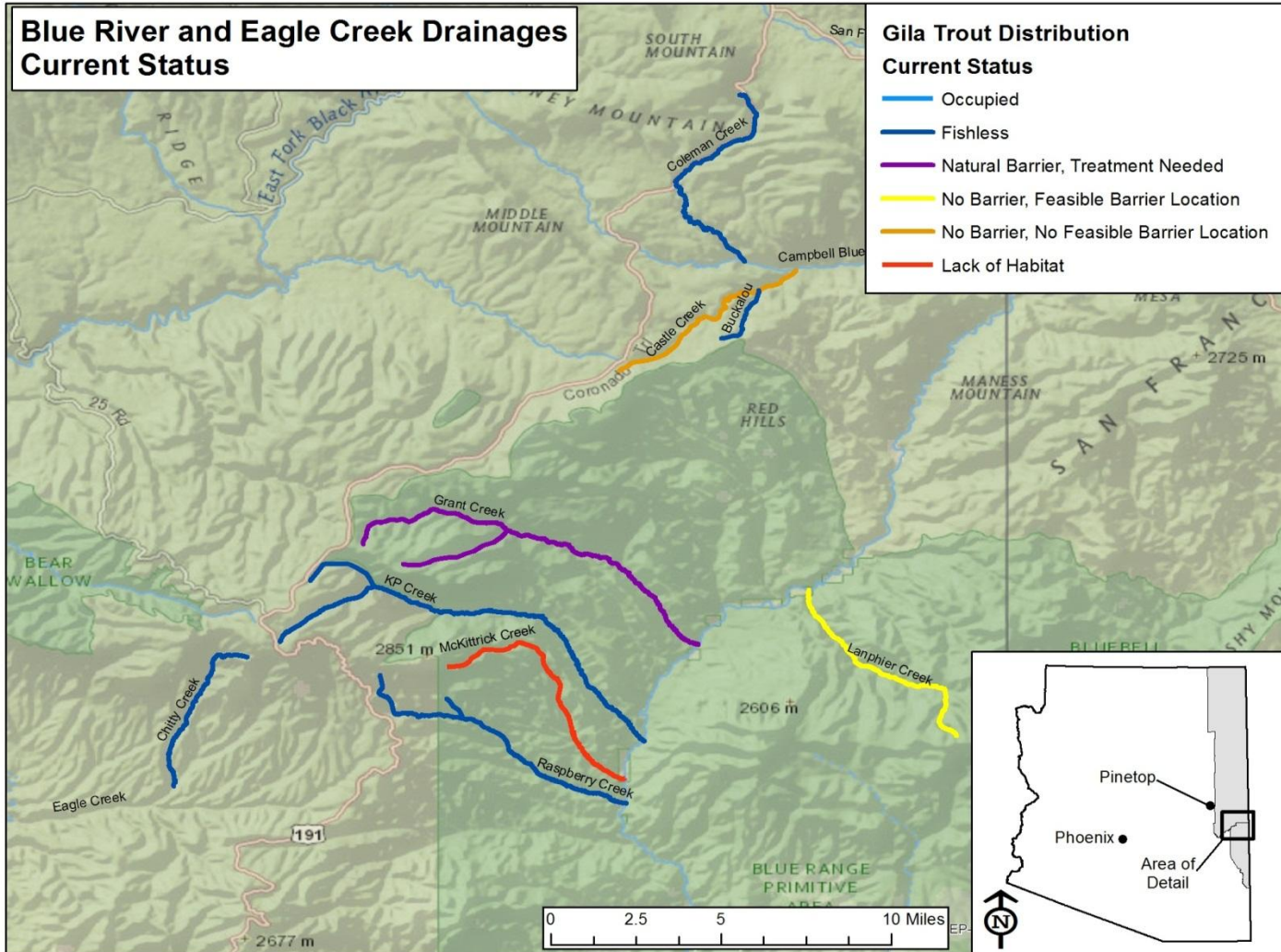
## 2 Recovery Units

- San Francisco Recovery Unit
  - Blue River Tributaries
- Mixed Lineage Recovery Unit
  - Tributaries to:
    - Eagle Creek
    - Verde River
    - Agua Fria River
    - Tonto Creek



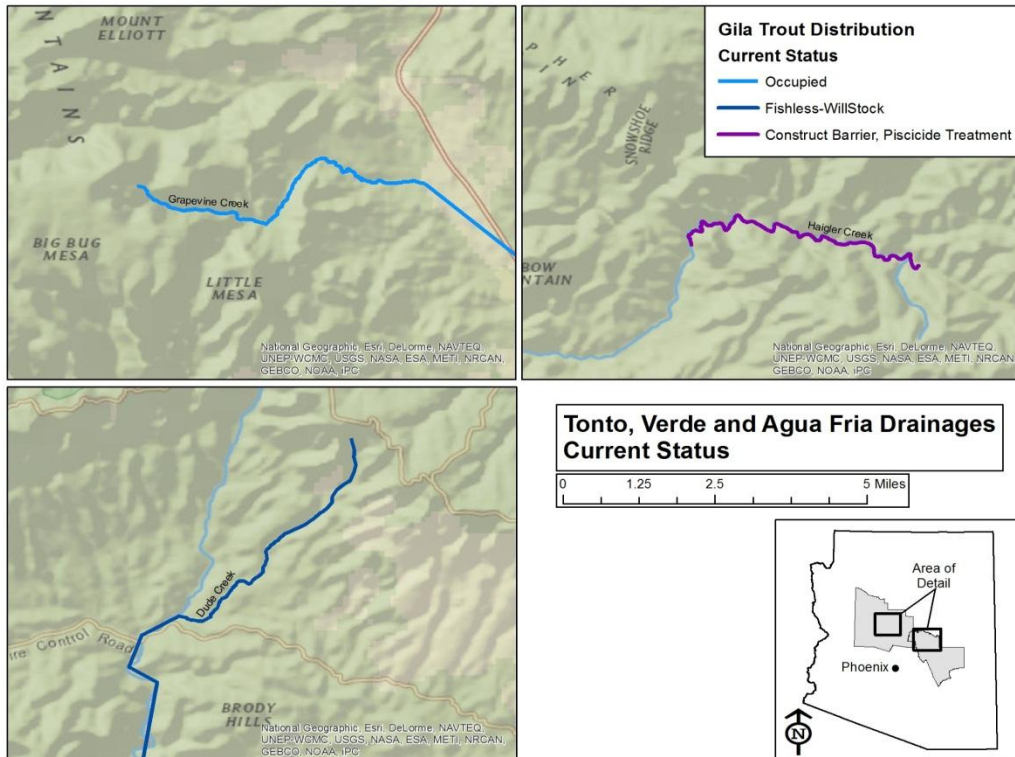
# San Francisco River Recovery Unit

## Blue River and Eagle Creek Drainages Current Status



# Mixed Lineage Recovery Unit

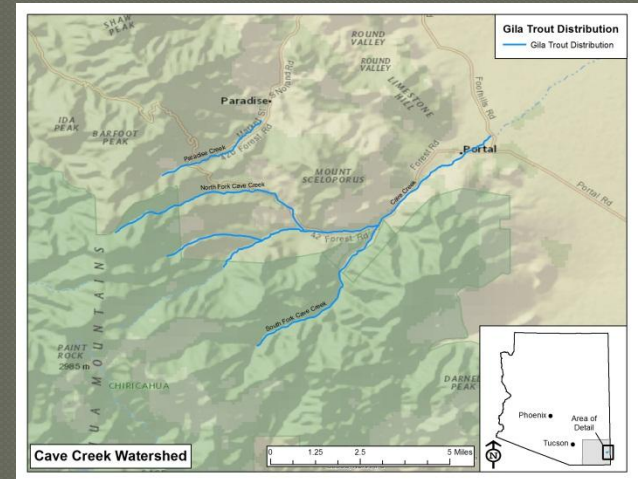
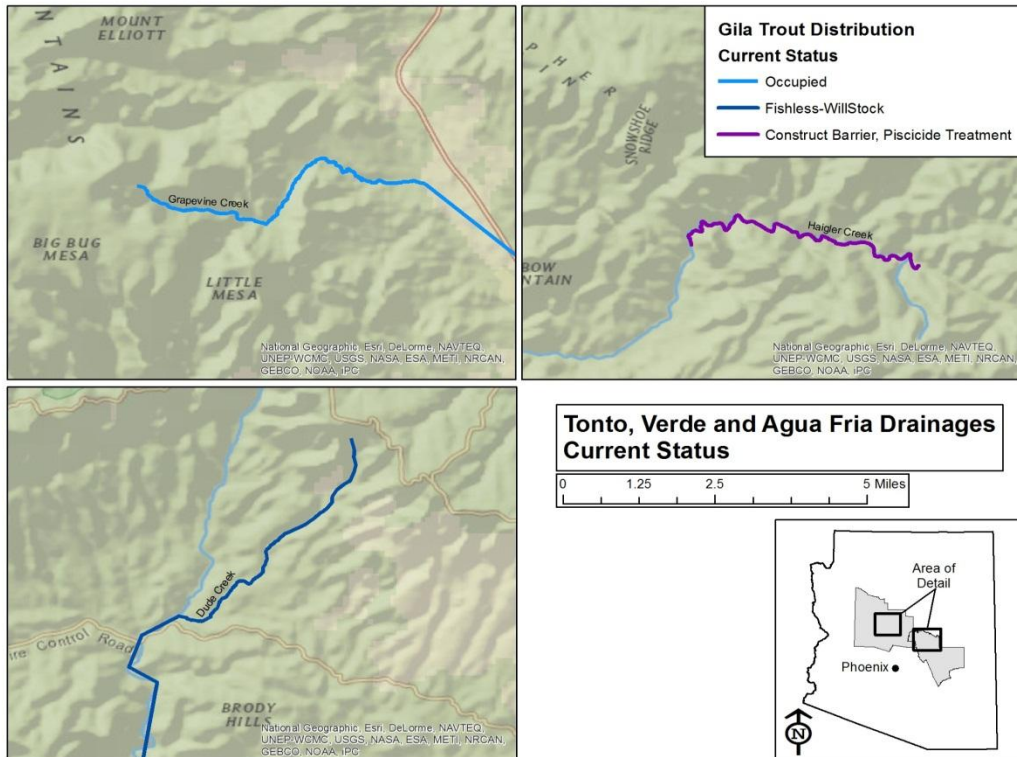
- Mount Graham
  - Frye Creek
  - Ash Creek
  - Marijilda Creek



# Mixed Lineage Recovery Unit

## Other Drainages

- Grapevine Creek
- Dude Creek
- Haigler Creek
- Cave Creek



# Partnership Waters Program

- Frye Creek/Frye Mesa Reservoir
- Grapevine Creek
- East Verde River
- Canyon Creek
- West Fork Black River
- Potential Streams
  - West Fork Oak Creek
  - Open to more suggestions





# Partnership Waters Program

- Frye Creek/Frye Mesa Reservoir
  - Old Pueblo TU
- Angling surveys semi-annually
  - Look for holdover trout in the reservoir
  - Get angler catch rates
  - Possibly look into growth rates



# Arizona Trout Challenge

---


- Encourage anglers to learn more about fishing for wild and native trout in Arizona
- 2 ways to complete the challenge
  - Catch all 5 wild trout in the state
    - Gila, Apache, Brown, Brook, Rainbow
  - Catch 6 of the 8 total species of trout in Arizona
    - Gila, Apache, Brown, Brook, Rainbow, Cutthroat, Grayling, Tiger (coming soon)

# Arizona Trout Challenge

## How to complete the challenge

- Go out and fish
- Take picture of the fish you catch
- Fill out the application
- Send in the application and the photos
- We will mail your certificate

Arizona Game and Fish Department  
**Please Print Clearly**  
Write name as you would like it to appear on your certificate

 Arizona Trout Challenge Application and Verification Form  
Indicate which challenge you are applying for:  
 Wild Trout Challenge  Arizona Trout Challenge

\_\_\_\_\_  
First Name M. Init. Last Name

\_\_\_\_\_  
Mailing Address

\_\_\_\_\_  
City State Zip Code Area Code Phone Number

Email address (optional): \_\_\_\_\_

I certify that I caught the following trout species listed below in Arizona waters. I have included a labeled photo of each trout.

1.	Species Caught	Date Caught			Stream Caught	Gear			Trout Released	
		Mo	Da	Ye		Fly	Lure	Bar	Y	N
2.	_____				_____				Y	N
3.	_____				_____				Y	N
4.	_____				_____				Y	N
5.	_____				_____				Y	N
6.	_____				_____				Y	N
7.	_____				_____				Y	N
8.	_____				_____				Y	N

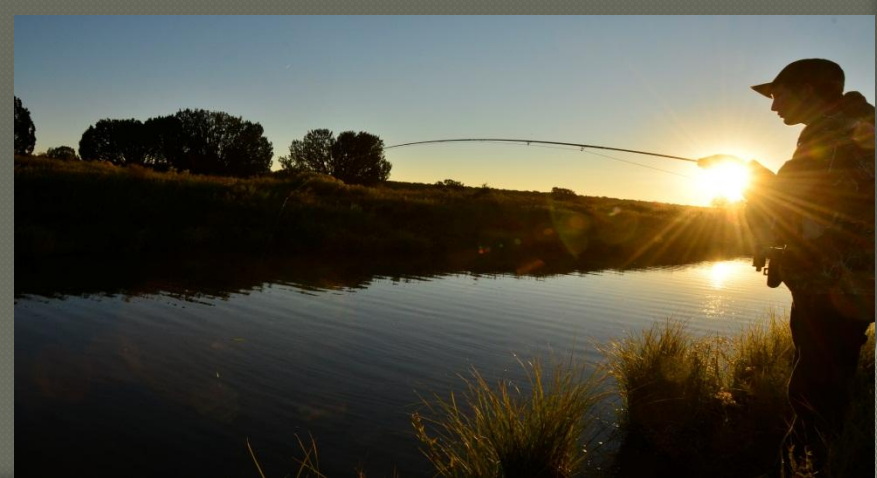
Signature: \_\_\_\_\_ Application Date: \_\_\_\_\_

To qualify for the Wild Trout Challenge:  
 Catch all 5 wild trout in Arizona

To qualify for the Arizona Trout Challenge:  
 Catch all 6 of the 8 trout in Arizona  
 Submit a labeled photo of each trout, labeled with the species, date, and location caught

Send this application and photos to:  
Arizona Game and Fish Department  
Fisheries Branch, Native Trout Program  
5000 W. Carefree Highway  
Phoenix, AZ 85086

\*Photos will not be returned with awarded certificates of completion. Anglers will be notified by email or postal mail



# Questions

